

IP-SA

PRE-ASSEMBLED 8" ANALOG EXTENSION LOUDSPEAKER & BAFFLE FOR USE WITH IPX ENDPOINTS



TECHNICAL DATA SHEET

PRODUCT SUMMARY

AtlasIED IP-SA is an indoor wall / ceiling mount Analog Extension speaker for use with any IPX Audio or Visual IP endpoints. It leverages the IPX Audio or Visual IP endpoints to extend audio coverage in environments where network wide communication is required, and multiple high output speakers are needed to overcome high ambient noise and / or large spaces.

KEY FEATURES

- Provides Additional Area Coverage for Larger Rooms When Connected to an IPX Audio or Visual Endpoint.
- Highly Efficient 8" (203mm) Coaxial, 16 Watt Loudspeaker.
- Wide Frequency Response of 70Hz–15.5kHz (± 5 dB) is Perfect for Speech and General Messaging Playback.

APPLICATIONS

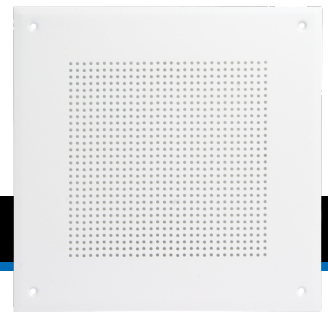
When joined with an AtlasIED IPX audio or visual IP endpoint, that is registered as a communication endpoint directly within InformaCast, GCK, and SA-Announce advanced notification applications, the IP-SA receives the same audio broadcast to enhance physical security while improving day-to-day communications through advanced alerting, bell schedules, pre-recorded & scheduled announcements, while leveraging the WAN or LAN network architecture.

Where 3rd party notification applications are not required, the IP-SA speakers can be attached to any IPX audio or visual IP endpoint that is registered as a SIP device directly to a SIP server or VoIP Communications Manager for critical alerts, intercom and public address applications..

IP-SA

PRE-ASSEMBLED 8" ANALOG EXTENSION LOUDSPEAKER & BAFFLE FOR USE WITH IPX ENDPOINTS

TECHNICAL DATA SHEET



AUDIO SPECIFICATIONS / PERFORMANCE

SYSTEM	
Type	Analog Extension Loudspeaker and Baffle
Speaker Model	C803A
Baffle Model	161-8
Speaker Size	LF: 8" (203mm), HF: 3" (76mm)
Frequency Response (+/- 5dB)	70Hz - 15.5kHz
Power Rating	16 Watts RMS
Sensitivity	98dB (Peak)
Power Taps	8Ω

ENCLOSURE	
Color	White
Grille Material	20-Gauge CRS
Baffle Material	20-Gauge CRS
Mounting / Rigging Provisions	4 x Screws
Safety Agency Ratings	UL Listed to Comply with UL 1480a
Ingress Protection	N/A
Logo	N/A
Product Dimensions (HxWxD)	11.43" (290mm) x 11.43" (290mm) x 2.92" (74mm)
Shipping Dimensions (HxWxD)	11.875" (302mm) X 11.875" (302mm) X 4.5" (114mm)
Net Weight - lbs	3.97lb (1.8kg)
Shipping Weight - lbs	5.17lb (2.35kg)

WARRANTY COVERAGE	
Warranty Period	5 Year

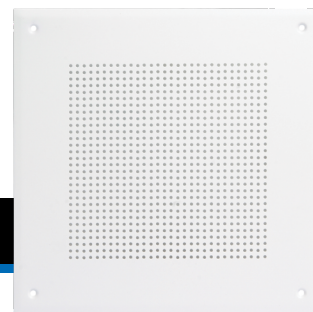
Note:

1. Sensitivity: Half space pink noise measurement at 6 ft (1.8 m) at 20% power; extrapolated to 1 meter and an input of 2.83 volts RMS.
2. Watts: All wattage figures are calculated using the rated nominal impedance.
3. Frequency response and sensitivity are half-space measurements.

IP-SA

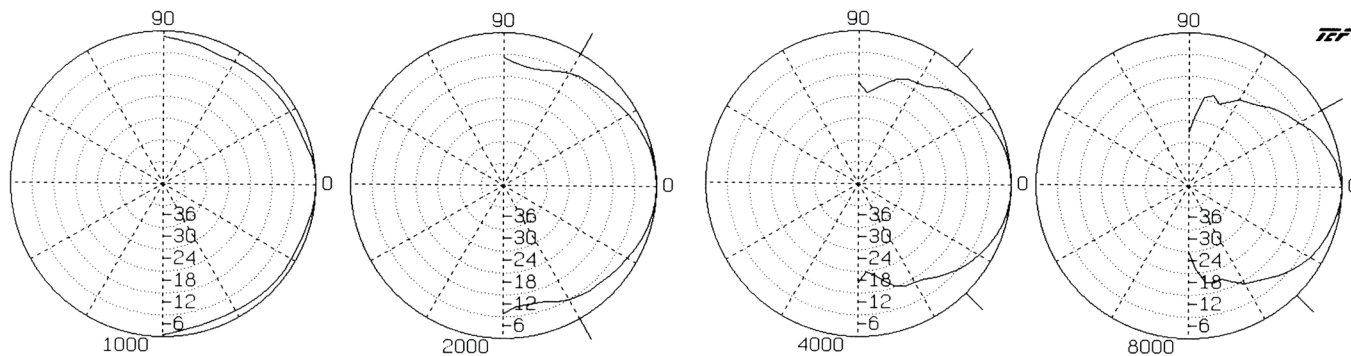
PRE-ASSEMBLED 8" ANALOG EXTENSION LOUDSPEAKER
& BAFFLE FOR USE WITH IPX ENDPOINTS

TECHNICAL DATA SHEET

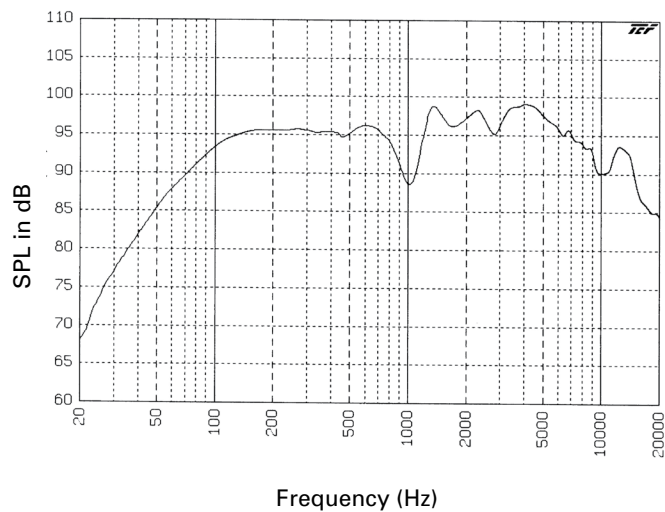


DIMENSIONAL DRAWING

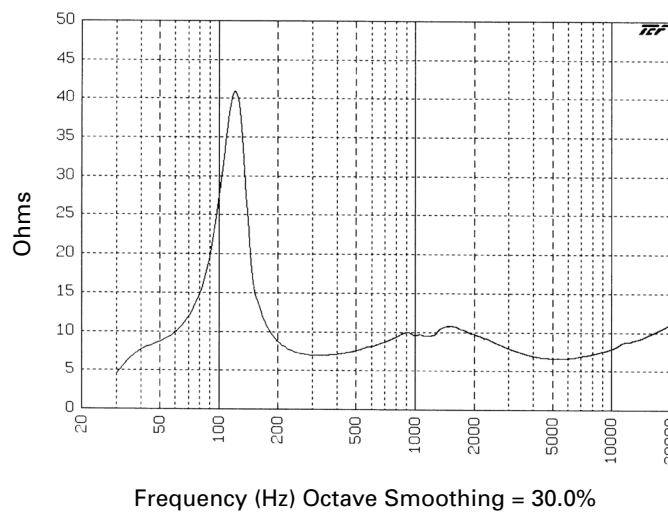
C803A Polars (Normalized to Zero on Axis) (-6dB)



FREQUENCY RESPONSE



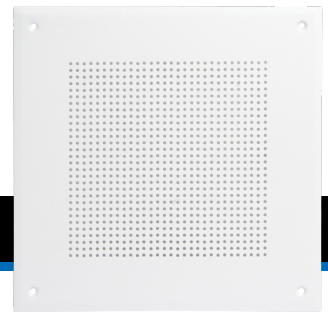
IMPEDANCE



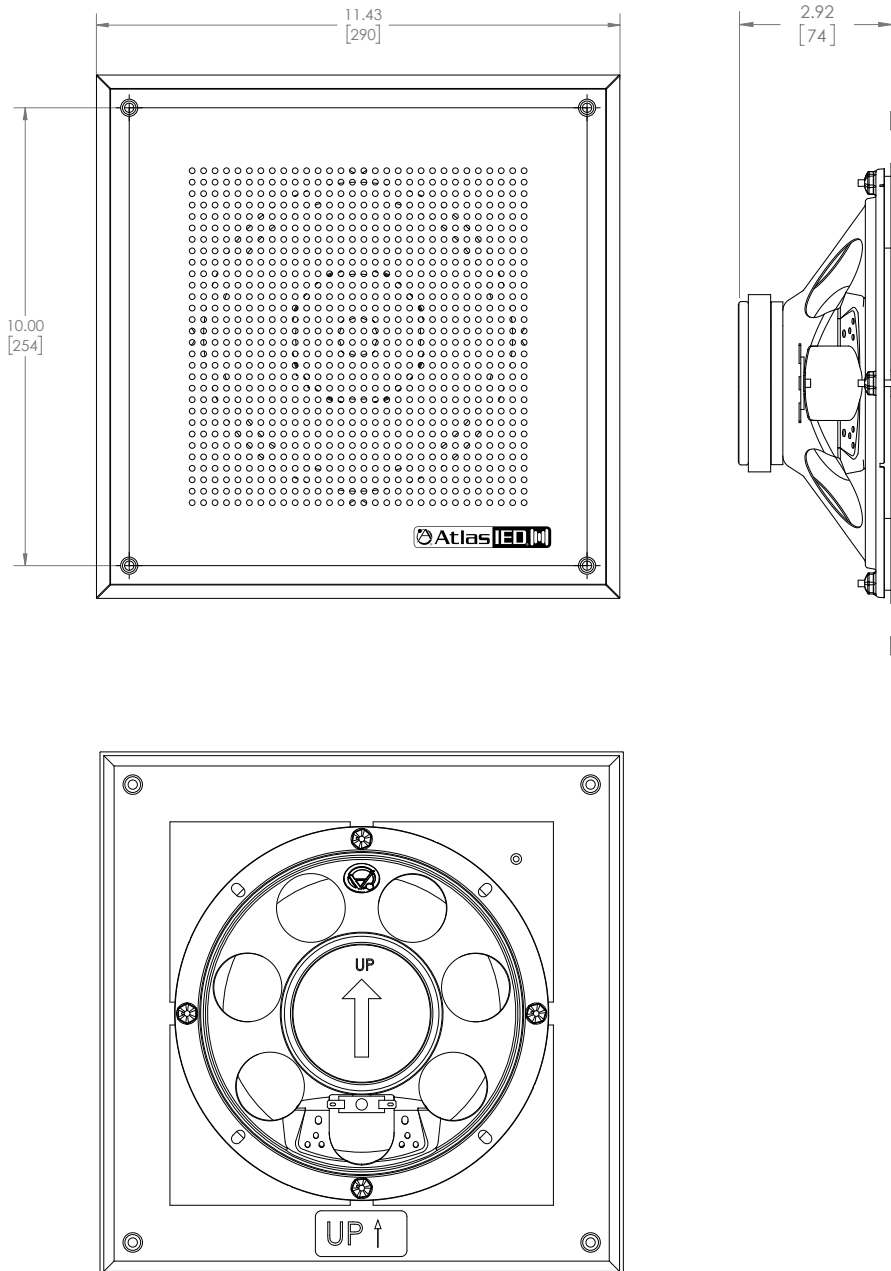
IP-SA

PRE-ASSEMBLED 8" ANALOG EXTENSION LOUDSPEAKER & BAFFLE FOR USE WITH IPX ENDPOINTS

TECHNICAL DATA SHEET



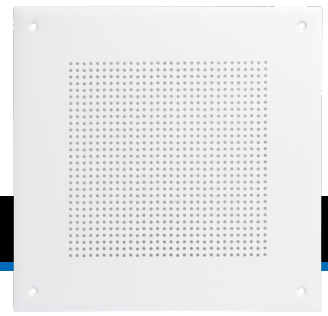
DIMENSIONAL DRAWING



IP-SA

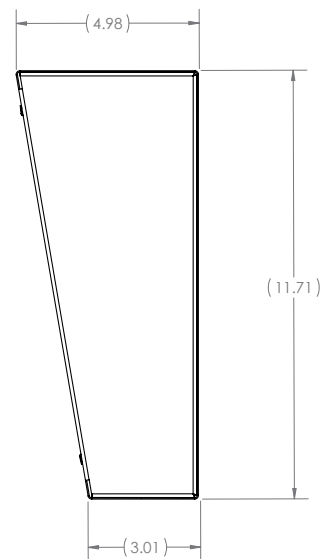
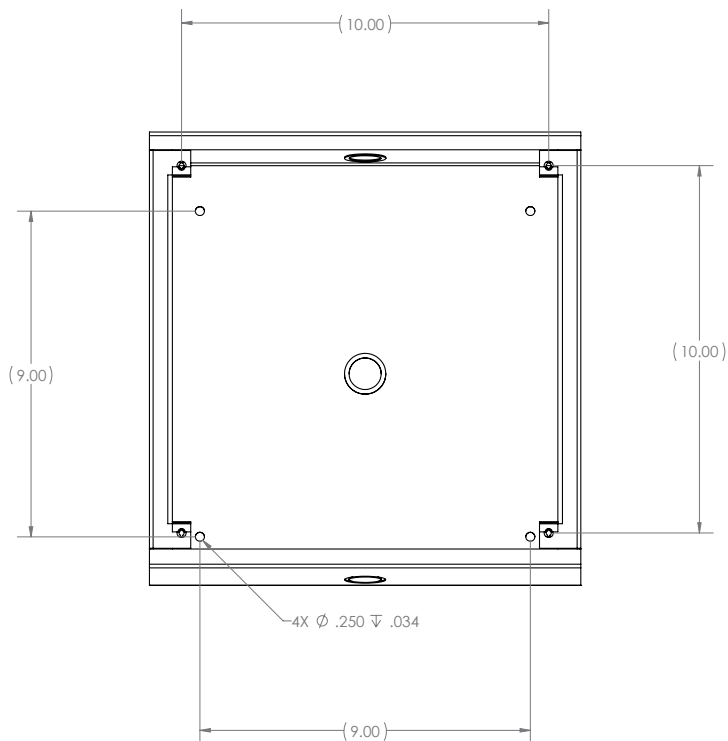
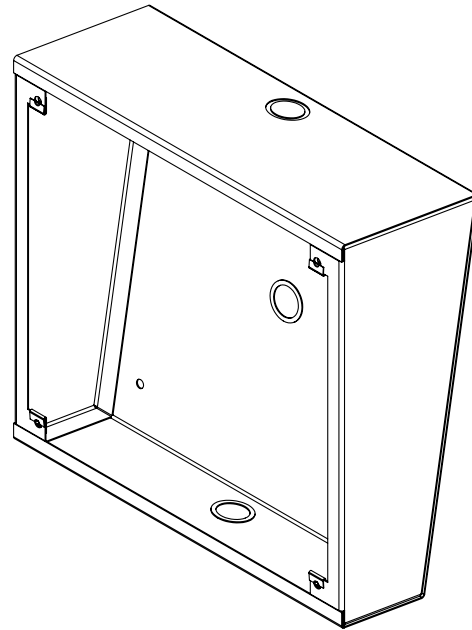
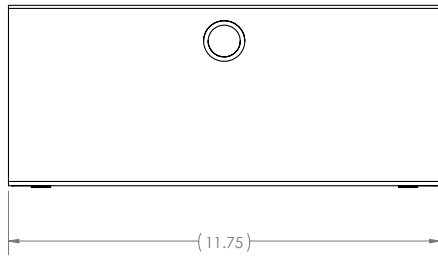
PRE-ASSEMBLED 8" ANALOG EXTENSION LOUDSPEAKER & Baffle for use with IPX endpoints

TECHNICAL DATA SHEET



DIMENSIONAL DRAWING

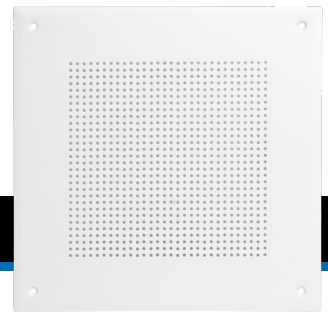
ACCESSORIES IP-SEA-S



IP-SA

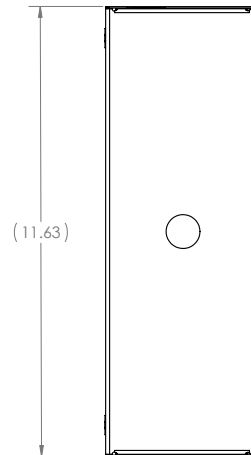
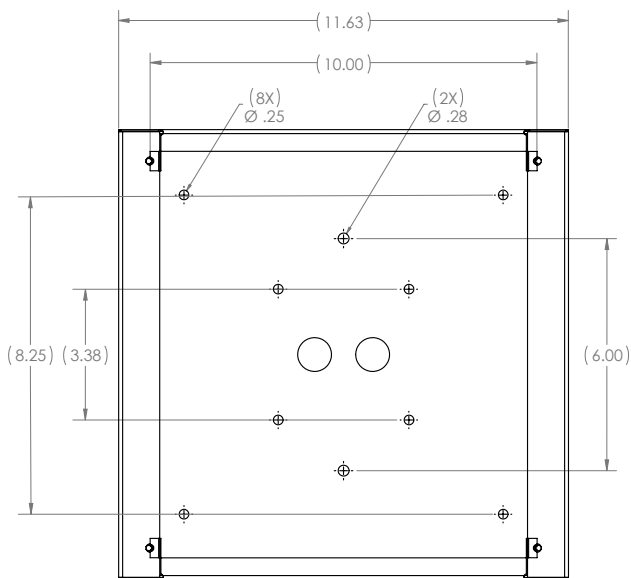
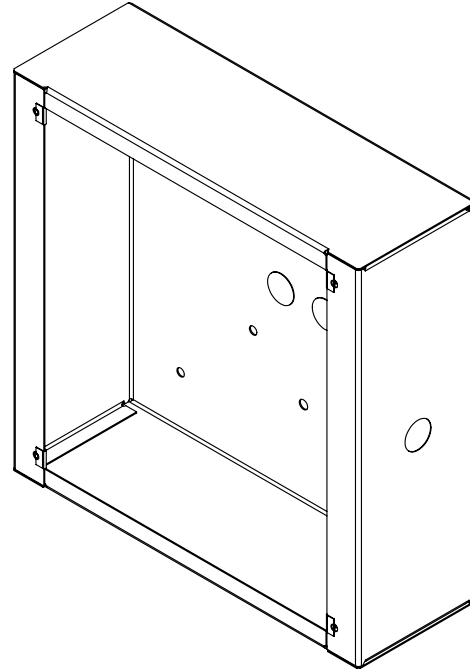
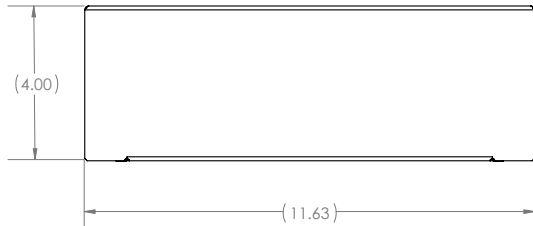
PRE-ASSEMBLED 8" ANALOG EXTENSION LOUDSPEAKER & Baffle FOR USE WITH IPX ENDPOINTS

TECHNICAL DATA SHEET



DIMENSIONAL DRAWING

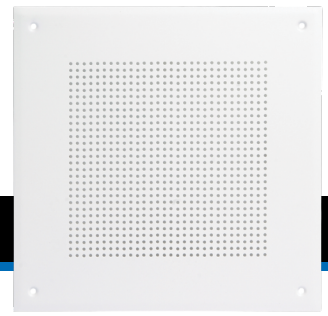
ACCESSORIES IP-SEST-S



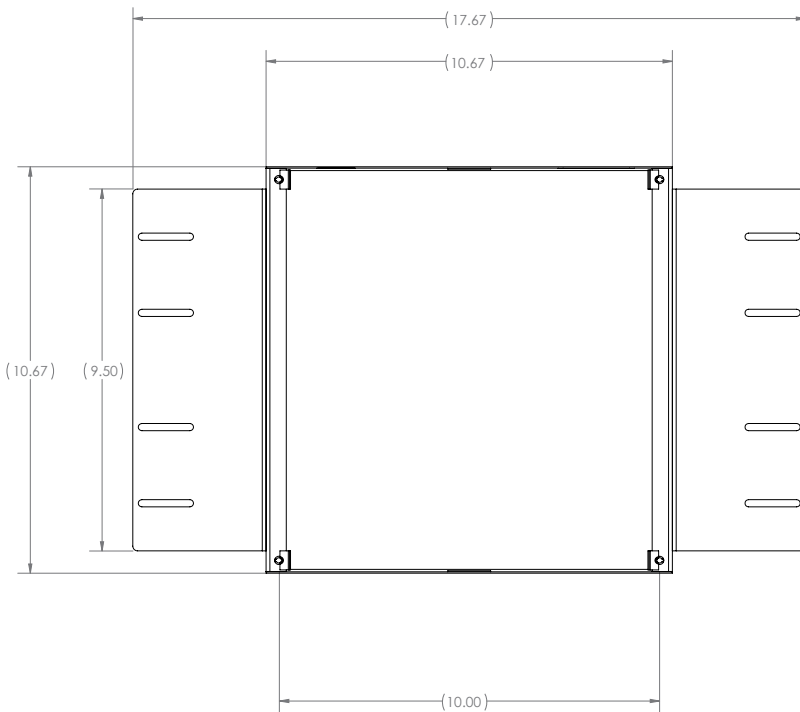
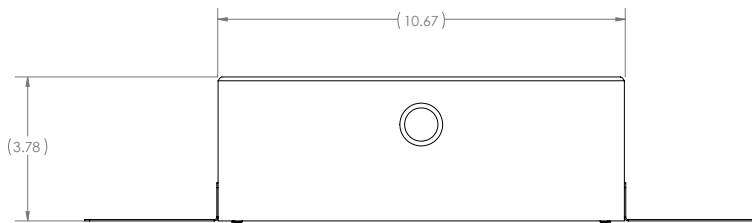
IP-SA

PRE-ASSEMBLED 8" ANALOG EXTENSION LOUDSPEAKER
& BAFFLE FOR USE WITH IPX ENDPOINTS

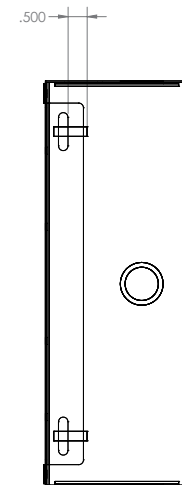
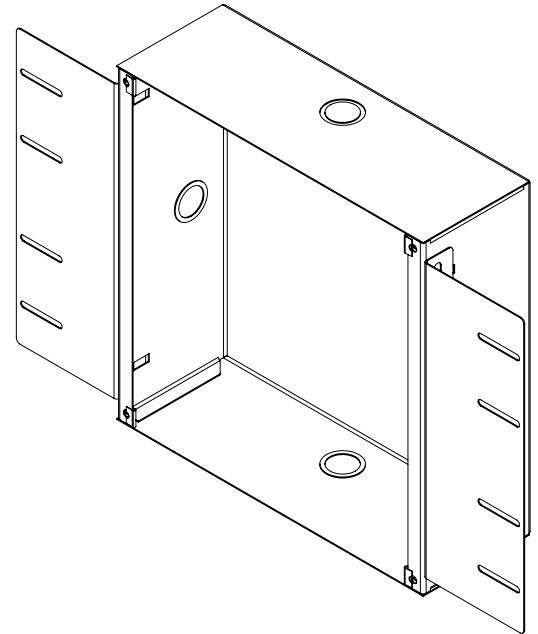
TECHNICAL DATA SHEET



DIMENSIONAL DRAWING



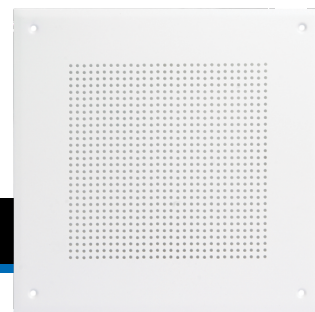
ACCESSORIES IP-FEST-S



IP-SA

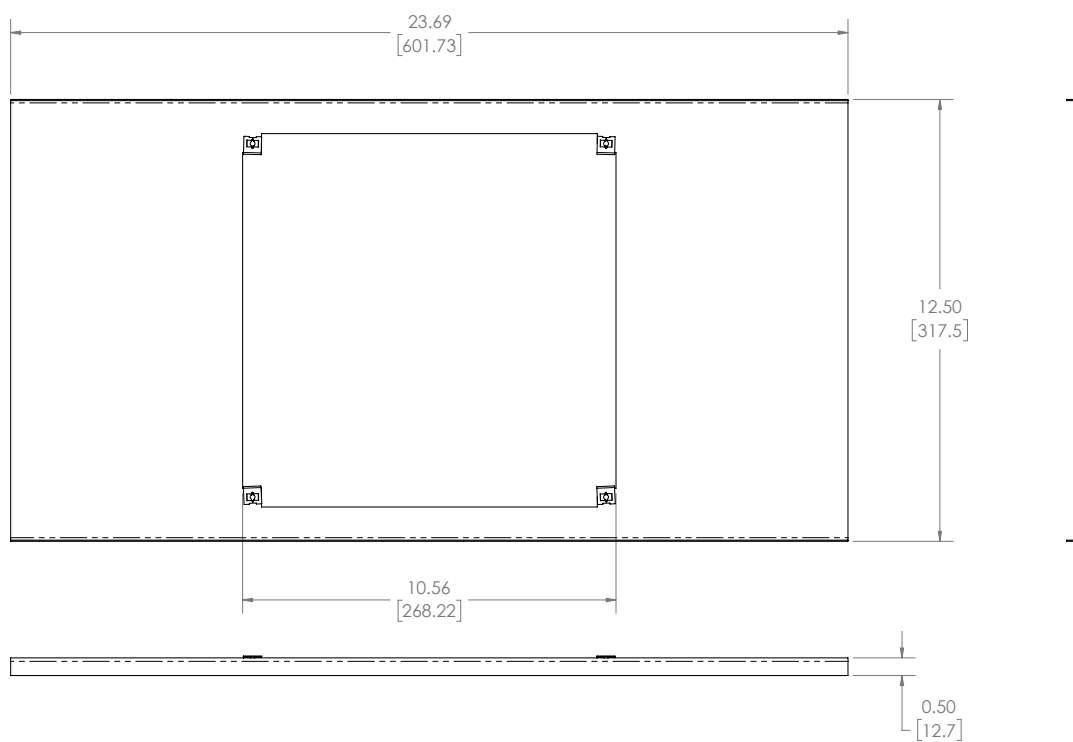
PRE-ASSEMBLED 8" ANALOG EXTENSION LOUDSPEAKER
& Baffle for use with IPX Endpoints

TECHNICAL DATA SHEET



DIMENSIONAL DRAWING

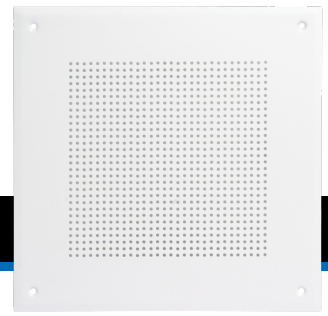
ACCESSORIES IP-STB



IP-SA

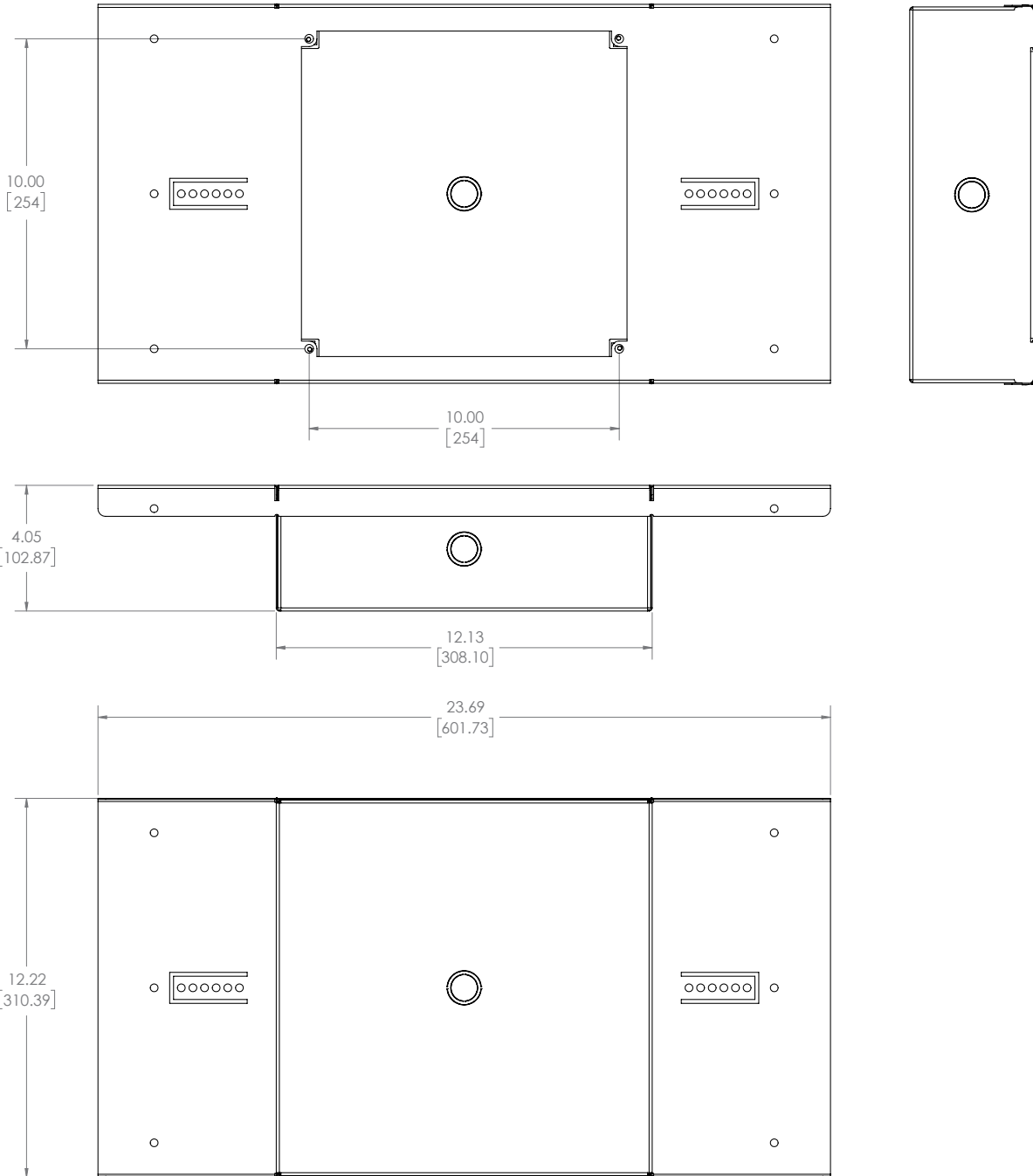
PRE-ASSEMBLED 8" ANALOG EXTENSION LOUDSPEAKER & BAFFLE FOR USE WITH IPX ENDPOINTS

TECHNICAL DATA SHEET



DIMENSIONAL DRAWING

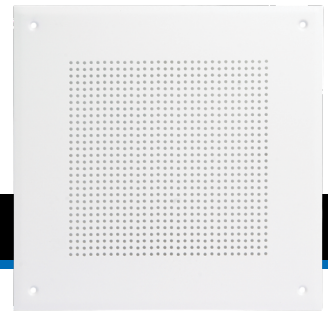
ACCESSORIES IP-STBE



IP-SA

PRE-ASSEMBLED 8" ANALOG EXTENSION LOUDSPEAKER & BAFFLE FOR USE WITH IPX ENDPOINTS

TECHNICAL DATA SHEET



ARCHITECT AND ENGINEER SPECS

The unit shall be AtlasIED model IP-SA. The indoor wall / ceiling mount Analog Extension Speaker System shall include factory assembled 8" Coaxial speaker and baffle combination.

The speaker shall be an 8" Coaxial driver with low-frequency reproducer cone shall be a full 8" (203mm) in diameter and the high frequency reproducer cone shall be 3" (76mm) in diameter. The woofer shall have a 10oz. (260g) ceramic magnet; the tweeter shall have a 2.35oz. (67g) ceramic magnet. The two reproducer sections shall be coupled through a built-in crossover network.

The crossover frequency shall be at 2800Hz. The speaker dispersion shall be 105° and frequency response range shall be 70Hz – 15.5kHz, (±5dB).

Sensitivity shall be 98dB at 1 Watt / 1 meter. Voice coil impedance shall be 8Ω. Low frequency voice coil diameter shall be 1" (25mm) and operate in a magnet field of at least 10,600 gauss. The maximum depth of the loudspeaker shall not exceed 27/8" (73mm).

AtlasIED IP-SA is an indoor wall / ceiling mount Analog Extension Speaker System overall dimensions shall be 11.5" SQ. (292mm). Finish shall be neutral white electrostatic powder coat metal baffle.

Optional enclosures shall include:

- IP-SEA-S** Surface mount angled enclosure for IP-SA neutral white finish
- IP-SEST-S** Surface mount straight enclosure for IP-SA neutral white finish
- IP-FEST-S** Flush mount straight enclosure for IP-SA reclaimed powder coat finish
- IP-STB** Tile bridge for IP-SA, not for use with enclosure
- IP-STBE** Tile bridge for IP-SA includes enclosure