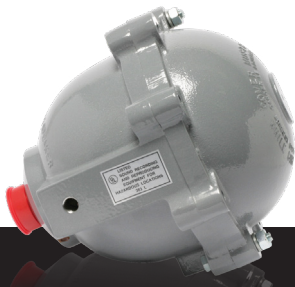


MLE Series

EXPLOSION PROOF DRIVERS

WIRING INSTRUCTIONS



WIRING THE DRIVER

The back cover of the explosion-proof driver enclosure must be removed for access to the field connections. Exercise special care by completely removing the bolts and lifting the back cover to avoid damaging the machined surfaces. Prior to re-assembly, make certain that the joining surfaces of the enclosure are free of any foreign matter that would interfere with proper mating of the machined surfaces. Tighten all bolt cover bolts to 8-9 ft-lbs (96-108 in-lbs).

NOTE: To provide the specified protection in hazardous locations, do not apply any type of compound/sealant to the machined flange. The MLE-1 does not include a factory installed pipe seal. The installer must provide an appropriate connector as directed by local codes or authority having jurisdiction. A pipe seal with integral field wiring leads is included with the MLE-3.

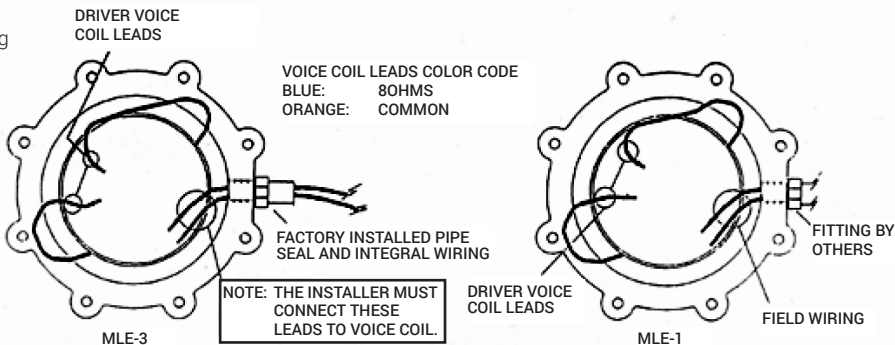
The models MLE-1T and MLE-3T include an integral line matching transformer.

Refer to the wiring diagrams when connecting field wiring.

Regulatory Agency Listings:

UL: File E27820, Guide VCSV

UNDERWRITERS' LABORATORY LISTINGS		
DRIVER	CLASS / GROUP	For Atmosphere Containing:
MLE-1 (T)	Class 1/ Group C and D	Gas Atmospheres (Including Ethyl, Gasoline, Naphtha, Ether, Butane, Alcohols, Propane)
MLE-3(T)	Class 1/ Group B, C, and D	Gas Atmospheres (Including Ethyl, Ether, Gasoline, Naphtha, Alcohols, Butane, Propane) Hydrogen, Gas and Vapor, (Mfg Gas)



TRANSFORMER TAPS, IMPEDANCE/WATTS		
OHMS	W 70V IN	W 25V IN
45	Do not use	15.0
89	Do not use	7.0
167	30.0	3.7
333	15.0	1.89
666	7.5	-----
1300	3.7	-----
2500	1.8	-----

