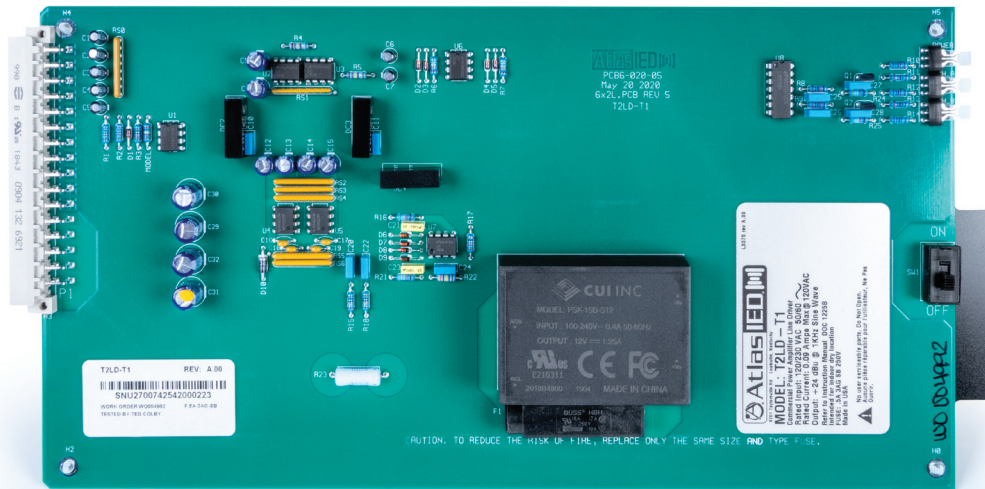


# T2LD

## TitanONE 2-Channel Line Driver Card



### Features

- 2 Channel Card-based Design for Use in the T112
- Gives Ability to Use External Amplifiers with T112 DSP Features Such as Ambient Analysis and EQ
- Gives Ability to Use External Amplifiers with GCK
- Gives Ability to Use External Amplifiers with Dante® or CobraNET™ through a T112 or T112C
- Can be Used in the Same T112 with T112 Amplifier Cards or Other T2LD-T1 Cards
- Works with 110V or 230-240V Power

### General Description

The AtlasIED Model T2LD is an optional component of the TitanONE Series Mainframe with DSP System. It is a 2-channel line driver module that can be installed in a T112 Integrated Power Amplifier Mainframe in place of a T302, T602 or T1202 modular amplifier.

The AtlasIED Model T2LD 2-channel line driver has two low impedance, balanced, floating, active outputs which are designed to drive very long lines. Its transformerless output design provides wider bandwidth while minimizing distortion at all frequencies. The result is improved overall system performance while maintaining cost efficiency.

In some applications, the T112 Mainframe with DSP is required to drive mixed speaker loads, such as groups of speakers operating from a 70 V line and others being self-powered and requiring line-level input signals. The T2LD can provide the line level outputs, while the TitanONE Series modular power amplifier cards can be used to drive the conventional distributed speakers. Both can be operated simultaneously in one T112 Mainframe.

The Model T2LD-T1 is designed for use in 120 / 230 / 240VAC systems.

<b>Electrical (Analog, Each Channel)</b>	
Maximum Input Level	+24 dBu (1 kHz Wine Wave)
Maximum Output Level	+24 dBu (1 kHz Wine Wave)
Total Harmonic Distortion (THD+N)	0.0006% (2 kHz Input, Max. Output, 10 Hz – 22 kHz filters)
Input Sensitivity	+24 dBu
Frequency Response	+0 dBu, -0.2 dBu (20 Hz – 20 kHz)
Noise Floor	-95 dBu (10 Hz – 22 kHz filters)
Signal-to-Noise Ratio (S/N)	> 100 dB (Unweighted, 20 Hz – 20 kHz)
Input Impedance (Z IN)	10 k $\Omega$
Output Impedance (Z OUT)	< 0.5 $\Omega$
Crosstalk	< -65 dB
Input Power	3W
<b>Controls</b>	
Power Switch	Two Position Slide Switch
<b>Indicators</b>	
Signal Present / Clipping (2, One per Channel)	Green / Yellow LED
Power On	Green LED
<b>Connectors</b>	
Connector Type	32-pin Euro Connector
<b>Mechanical</b>	
Product Dimensions (HxWxD)	6.8" x 1.8" x 12.5" (173mm x 46mm x 318mm)
Shipping Dimensions (HxWxD)	10" x 10" x 16" (254mm x 254mm x 406mm) (Qty 1) 10" x 17" x 24" (254mm x 432mm x 610mm) (Qty 6)
Net Weight - lbs	4lb (1.8kg)
Shipping Weight - lbs	2.76 lbs (1.25kg) (Qty 1) 9.95 lbs (4.51kg) (Qty 6)
<b>Environmental</b>	
Operating Temperature Range	+32°F to +122°F (0°C to +50°C) (Applicable for Typical Voice Paging and Background Music Applications)
Storage Temperature Range	-40°F to +158°F (-40°C to +70°C)
<b>Warranty Coverage</b>	
Warranty Period	3 Years

**NOTES:**

1. All measurements at 120VAC unless noted otherwise.

## Architect and Engineer Specifications

The T2LD 2-channel Line Driver is a component card to be used with the T112 Mainframe with DSP. It shall function as a 2-channel line driver module.

The T2LD has two low impedance, balanced, floating, active outputs. It shall utilize differential transformer-less output design for low distortion at all frequencies.

Acceptable models shall be:

T2LD-T1 – 2-Channel TitanONE Line Driver for 120 / 230 / 240VAC supply voltage